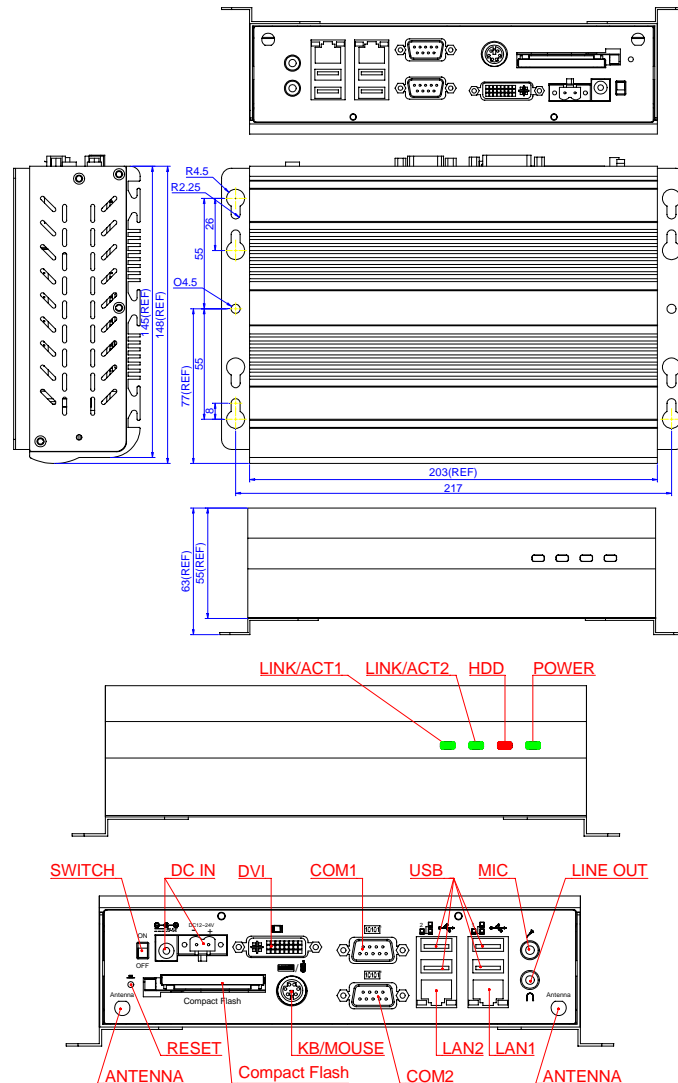


1. Brief

The FX5504 is a compact size embedded system with Intel low-power Celeron-M or Pentium-M processor board inside. This user's quick reference provides the I/O outlets description and their pin assignment.

2. Dimensions (in mm)



3. Packing List

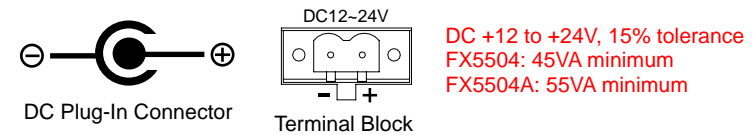
- 1 FX5504x embedded system.
- 1 AC to DC power adapter and 1 AC power code cable.
- 1 Y-type (3-end) PS/2 keyboard plus mouse port adapter cable.
- 1 44-pin flat cable and 4 screws for fixing and connecting a 2.5" hard disk drive.
- 1 DVI to CRT adapter kit. (optional)
- 1 2-pin apartable terminal block and optional 2 L-type universal fixers and 6 screws.
- 1 compact disc includes software utilities and manuals.

4. Features

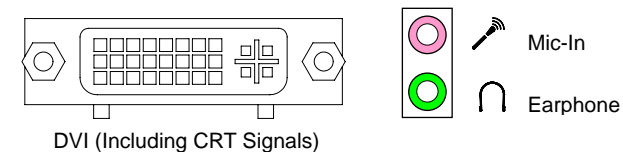
- * **Processor Board**
Intel low power Celeron-M (FX5504) or Pentium-M (FX5504A) processor with 512MB DDR RAM.
- * **I/O Outlets**
Two 10/100/1000 base-TX Ethernet ports.
4 USB ports (V2.0) and 2 RS-232 serial ports.
1 DVI (including CRT) and 1 PS/2 compatible keyboard/mouse interface.
1 Earphone and 1 Microphone connectors.
1 mini-PCI socket for mini-PCI I/O modules, especially for WLAN modules.
1 DC-In plug connector and 1 terminal block with 1 power switch.
1 power LED, 1 HDD/CF access LED, and 2 LAN LEDs.
1 Push button reset switch.
- * **Storage Bay**
1 CompactFlash socket for CompactFlash modules or MicroDrives.
One 2.5" hard disk space.
- * **Power requirement**
FX5504: +12 ~ +24V DC with 15% tolerance, 25VA maximum with 2.5" HDD & 19V input voltage.
FX5504A: +12 ~ +24V DC with 15% tolerance, 30VA maximum with 2.5" HDD & 19V input voltage.
- * **Dimensions**
148mm(D) x 203mm(W) x 55mm(H)

5. I/O outlets and LED Indicators

A. Power Connectors

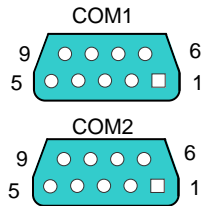
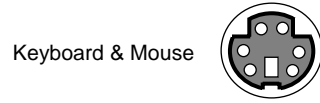


B. Video and Audio Connectors

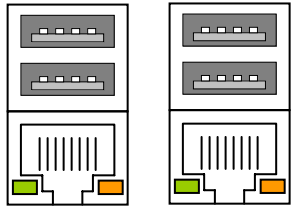


C. Keyboard/ Mouse and Serial Port Connectors

Standard PS/2 keyboard can be plugged into this connector without any adapter cable. If PS/2 keyboard and mouse will be used simultaneously, the included Y-type adapter cable is needed.



D. USB/LAN Connectors and LED Indicators (RJ45)



The LAN port is a RJ45 connector with 2 LEDs. The right side LED (orange) indicates data is accessing and the left side LED (green) indicates on-line status. (When lighted indicates on-line and off indicates off-line)



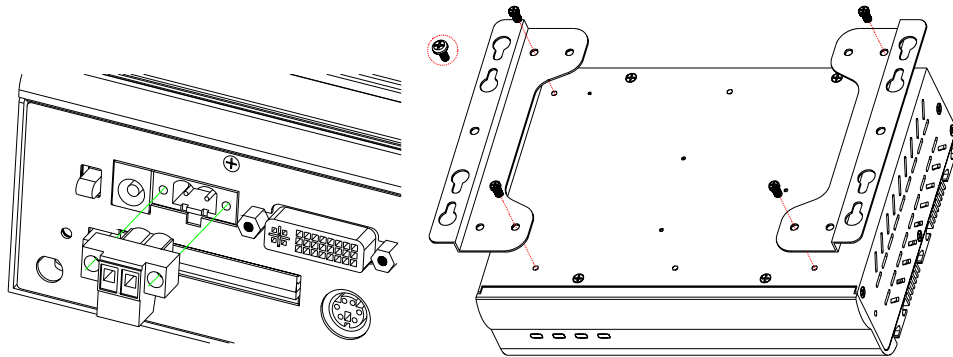
Note: LAN1 and LAN2 LEDs indicate on-line/access status of LAN #1 and LAN #2 respectively.

6. Software Configuration and Driver Installation

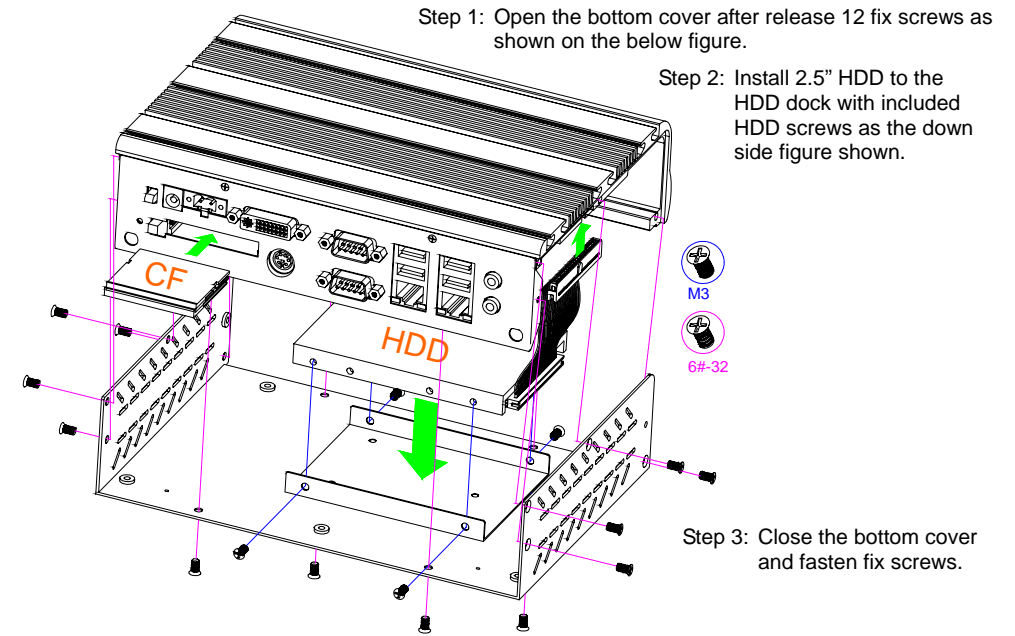
Please refer to the driver installing documentaion in the included Compact Disc for installing what device driver you need. If you need to change the system settings or configurations of I/O ports, Please refer to User's Manual (also in the included Compact Disc) for details.

7. Installing the L-type universal fixers on FX5504

Left: Using the included apartable terminal block to supply the DC power
 Right: Installing the FX5504 with optional L-type universal fixers.



8. Installing 2.5" HDD into FX5504



9. Installing RAM Module, mini-PCI module and Wireless Antenna into FX5504

The following figures will guide you how to install DDR RAM Modules and mini-PCI modules with antenna into the FX5504. Please be noted that open the bottom cover before to install modules.

